



## **Simplify the Complexities of Esophageal Function Testing...**

- Bolus transit is the single most important parameter for assessing dysphagia and qualifying patients prior to anti-reflux surgery... **information that you cannot get with manometry alone.**
  - Patients with abnormal manometry frequently have normal bolus transit; only impedance can determine which patients with manometric abnormalities actually have esophageal function disorders.
  - Patients with normal manometry can have abnormal bolus transit; manometry does not measure or accurately predict bolus transit.
- Now, with **HRiM**, you can view and assess contractile activity and bolus transit dynamics of the entire swallow process through the combination of high resolution manometry AND impedance...

**from a single screen!**

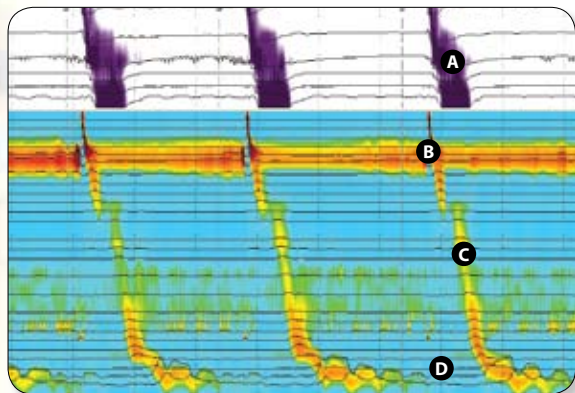
**INSIGHT™ HRiM™**

High Resolution Impedance Manometry System



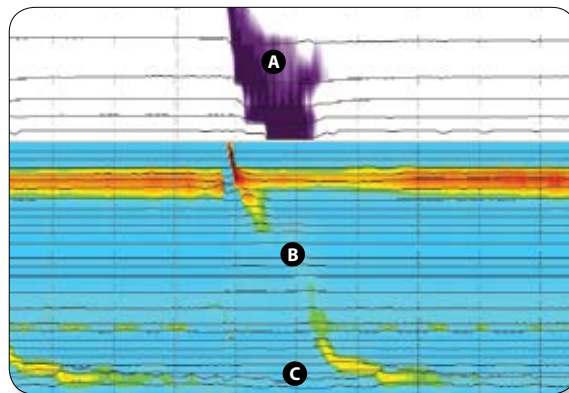


**Normal Study**



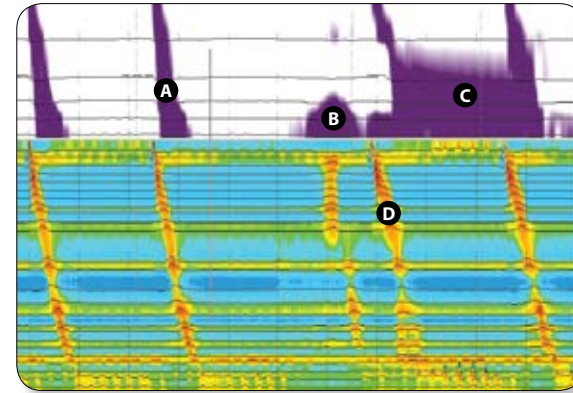
(A) – Complete Bolus Transit, (B) – UES Relaxation  
(C) – Effective Contraction Wave, (D) – LES Relaxation

**Ineffective Manometry - Complete Bolus Transit**



(A) – Complete Bolus Transit, (B) – Ineffective Contraction Wave,  
(C) – LES Relaxation

**Effective Manometry - Retained Bolus**



(A) – Complete Bolus Transit, (B) – Reflux,  
(C) – Retained Bolus, (D) – Effective Contraction Wave

Manometry alone is no longer sufficient in evaluating dysphagia and qualifying patients for anti-reflux surgery. *The missing component is impedance - the Power of Z.*



The new **INSIGHT HRiM** system, with exclusive **BioVIEW®** software, assesses muscular activity with high resolution manometry and bolus transit dynamics with impedance. **INSIGHT HRiM** provides comprehensive esophageal function data in one simple test performed from a single probe position.

- Easy to learn
- Easy to use
- Time efficient
- Comprehensive data

*“Now with HRiM, impedance/manometry classifies which manometric abnormalities are associated with a defect in esophageal transit and improves the specificity of manometry testing.”*

– Donald O. Castell, MD, MACG  
Professor of Medicine  
Director of Esophageal Disorders  
Medical University of South Carolina  
Charleston, SC USA



**Advanced Clinical Education**

Comprehensive education is a critical element to the success of G.I procedures and diagnostics. Under the direction of Dr. Donald Castell, world renowned esophagologist, Sandhill presents a variety of clinical training programs on GI diagnostic testing.



Sandhill Scientific, Inc  
9150 Commerce Center Circle, #500  
Highlands Ranch, CO 80129 USA  
800.468.4556 303.470.7020  
Fax: 303.470.2975

Sandhill Scientific - UK Ltd.  
Oakfield Industrial Estate  
Stanton Harcourt Road  
Eynsham, WITNEY, Oxon OX29 4AN  
Tel: +44 1865.882532  
Fax: +44 1865.883970

Sandhill Scientific - Europe  
Decopra s.r.o  
Svabky 2, Budova B  
180 00 Praha 8  
Czech Republic  
Tel: +420 222.352.340  
Fax: +420 266.310.110